

# VISITOR GUIDE

**COOPER  
HEWITT**

 Smithsonian Design Museum



## WELCOME TO COOPER HEWITT, SMITHSONIAN DESIGN MUSEUM

We invite you to discover the importance of design and its power to change the world.

## HOURS OF OPERATION

### MUSEUM, SHOP, GARDEN, AND CAFE

Daily 10 a.m.–6 p.m.

@cooperhewitt  
#CooperHewitt



## ADMISSION

Please have your ticket ready to be scanned at the accessible entrance at 2 East 91st Street. Tickets are not required to visit the Garden, cafe, and SHOP Cooper Hewitt.

Adults	\$18
Seniors (62 and above)	\$12
Visitors with Disability	\$10
Students (with ID)	\$9
18 and under	Free
Museum Members	Free

Pay-What-You-Wish, Daily, 5–6 P.M.

Reserve your tickets online at [cooperhewitt.org](https://www.cooperhewitt.org)

# 1 FLOOR



Elevator



Restroom



Tickets

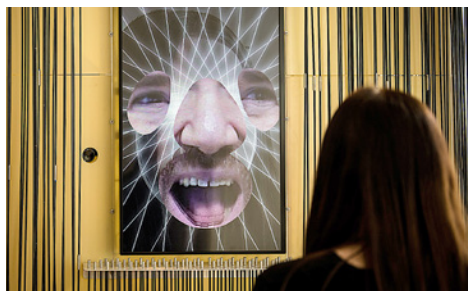
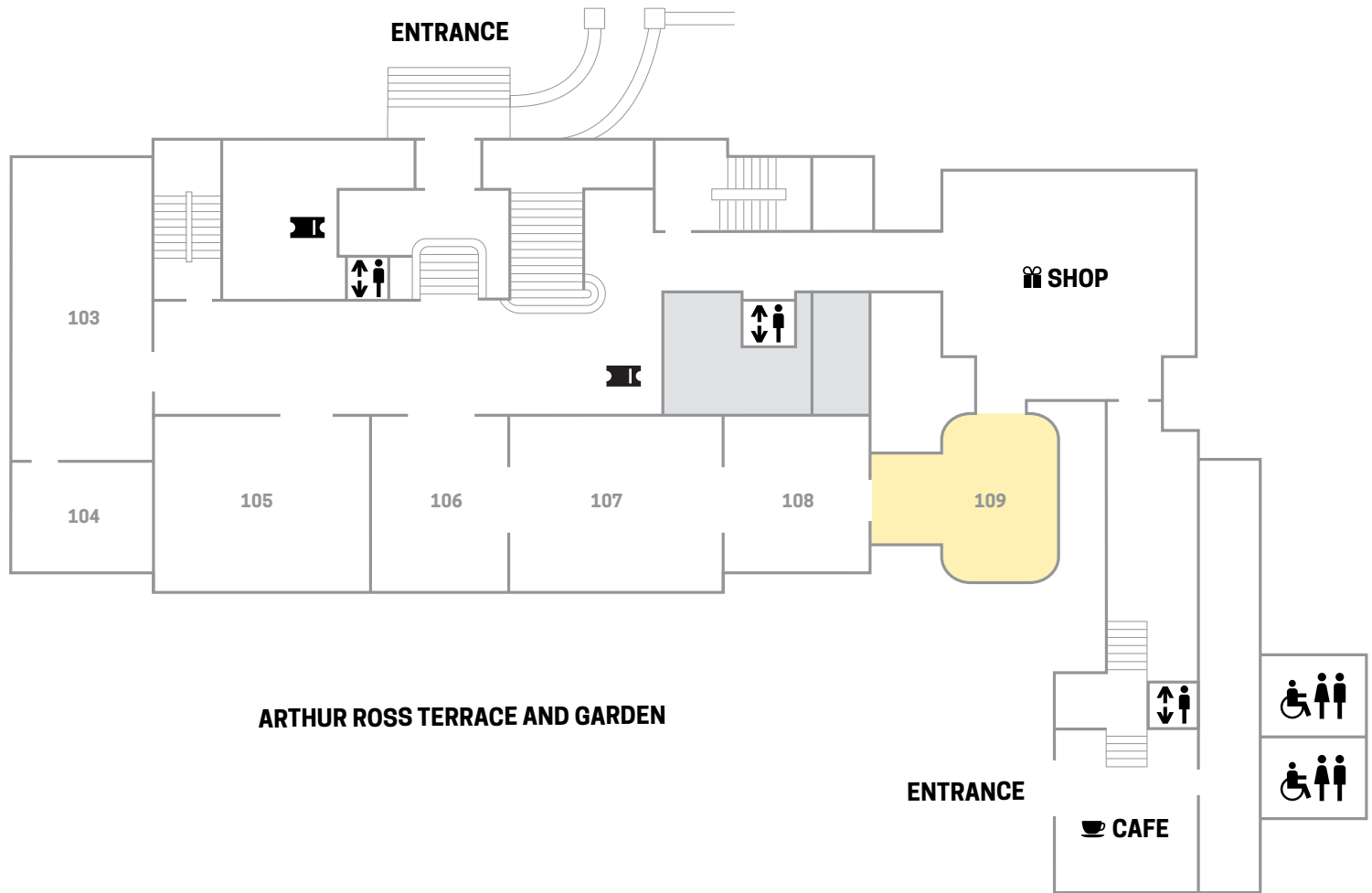


Temporarily closed



A Breathing Space for rest and reflection

Visitors who wish to bypass the exhibition can enter through SHOP Cooper Hewitt.



## FACE VALUES: EXPLORING ARTIFICIAL INTELLIGENCE

Galleries 103-104

Explore the pervasive but often hidden role of facial-detection technology in contemporary society.



## MR. PERGOLESI'S CURIOUS THINGS: ORNAMENT IN 18TH-CENTURY BRITAIN

Through January 29, 2023

Gallery 105

View the fanciful drawings and prints by Michelangelo Pergolesi, an Italian printmaker and ornament designer. The exhibition highlights his skill in transforming ancient relics into lighthearted decorative motifs.



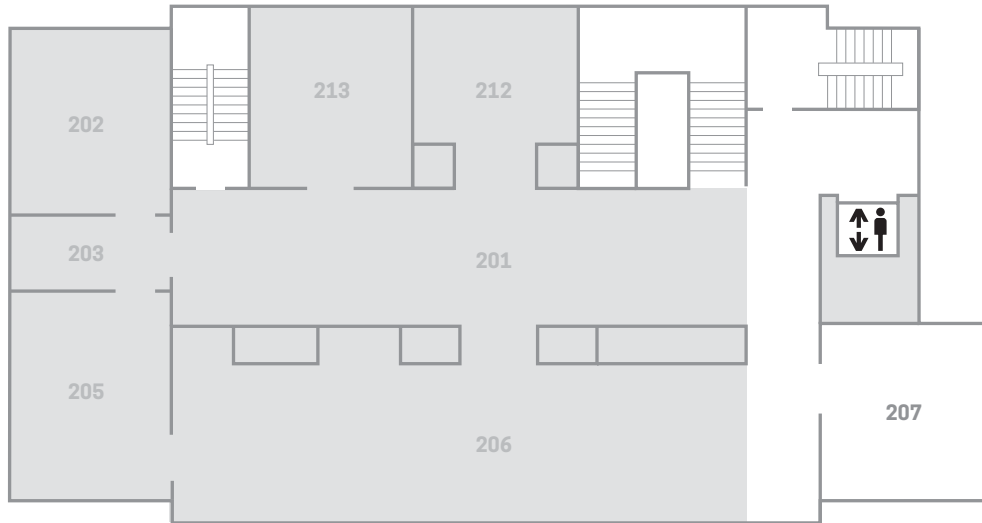
## DESIGN AND HEALING: CREATIVE RESPONSES TO EPIDEMICS

Through February 20, 2023

Galleries 106-109

What is design's role in times of crisis? This exhibition features the work of designers, artists, doctors, engineers, and neighbors who in times of need—past and present—asked, "How can I help?"

# 2 FLOOR



## IMMERSION ROOM

Ongoing

Gallery 207

Design your own wallpaper and see it projected on the walls from floor to ceiling.



## HECTOR GUIMARD: HOW PARIS GOT ITS CURVES

Opens November 18, 2022

Galleries 202, 203, 205, 206

This exhibition invites a new understanding of France's most famous Art Nouveau architect, Hector Guimard (1867–1942). Best known for his iconic Paris Métro entrances, this exhibition will provide urban and historical context for the full range of Guimard's design work.



## CARNEGIE MANSION

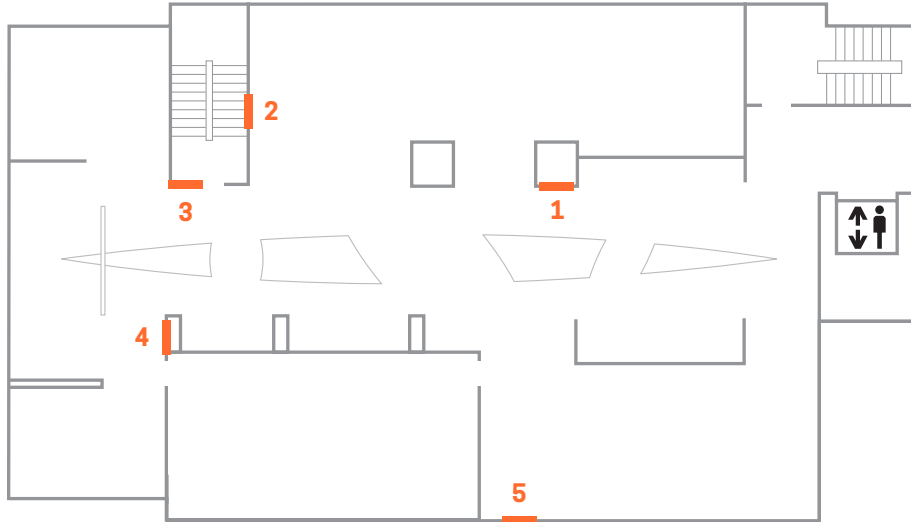
Cooper Hewitt is housed in the former home of industrial magnate and philanthropist Andrew Carnegie and his family. Completed in 1902, the mansion was designed in the style of an English Georgian country house.



Learn more about the building that Cooper Hewitt calls home. Book available for purchase.

[shop.cooperhewitt.org](http://shop.cooperhewitt.org)

# 3 FLOOR



## FIVE QUESTIONS

- 1 How can design engage creative confrontation?
- 2 How can design help transitions from instability to peace?
- 3 How can design support safe, healthy, respectful environments?
- 4 How can design embrace truth and dignity in a search for peace and justice?
- 5 How can design address the root causes of conflict?

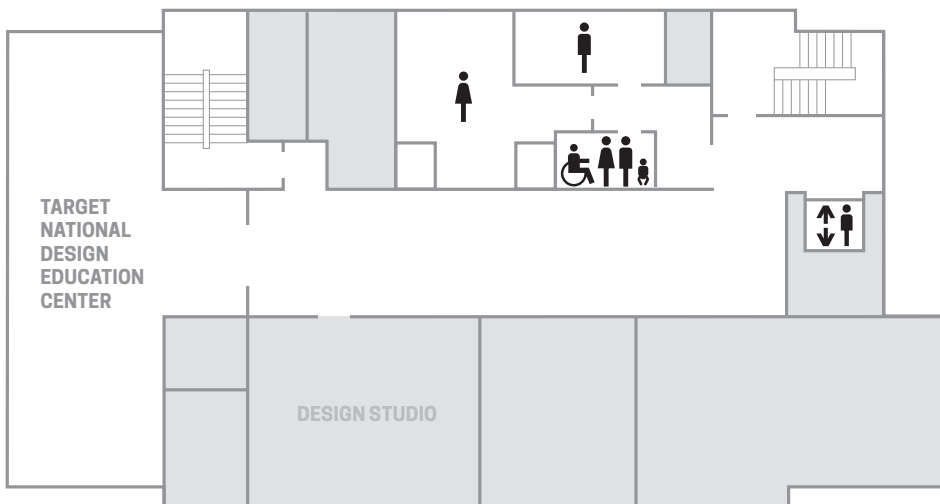


## DESIGNING PEACE

Through September 4, 2023

*Designing Peace* explores the unique role design can play in pursuing peace. The exhibition features design projects from around the world that look at ways to create and sustain more durable peaceful interactions—from creative confrontations that challenge existing structures to designs that demand embracing justice and truth in a search for reconciliation.

# GROUND FLOOR



## NATIONAL HIGH SCHOOL DESIGN COMPETITION

A poster exhibition of project entries from Cooper Hewitt's annual National High School Design Competition, which for 2022 challenged students to design for a more peaceful and just world.