

VISITOR GUIDE

**COOPER
HEWITT**

 Smithsonian Design Museum



WELCOME TO COOPER HEWITT, SMITHSONIAN DESIGN MUSEUM

We invite you to discover the importance of design and its power to change the world.

HOURS OF OPERATION

MUSEUM, SHOP, GARDEN, AND CAFE

Wednesday–Monday	10 A.M.–6 P.M.
Tuesday	Closed

@cooperhewitt
#CooperHewitt



ADMISSION

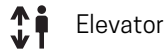
Please have your ticket ready to be scanned at the accessible entrance at 2 East 91st Street. Tickets are not required to visit the Garden, cafe, and SHOP Cooper Hewitt.

Adults	\$18
Seniors (62 and above)	\$12
Visitors with Disability	\$10
Students (with ID)	\$9
18 and under	Free
Museum Members	Free

Pay What You Wish admission Wednesday–Monday, 5–6 p.m.

Reserve your tickets online at cooperhewitt.org

1 FLOOR



Elevator



Restroom



Tickets



Temporarily closed

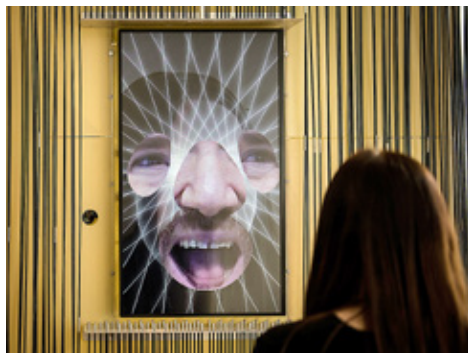
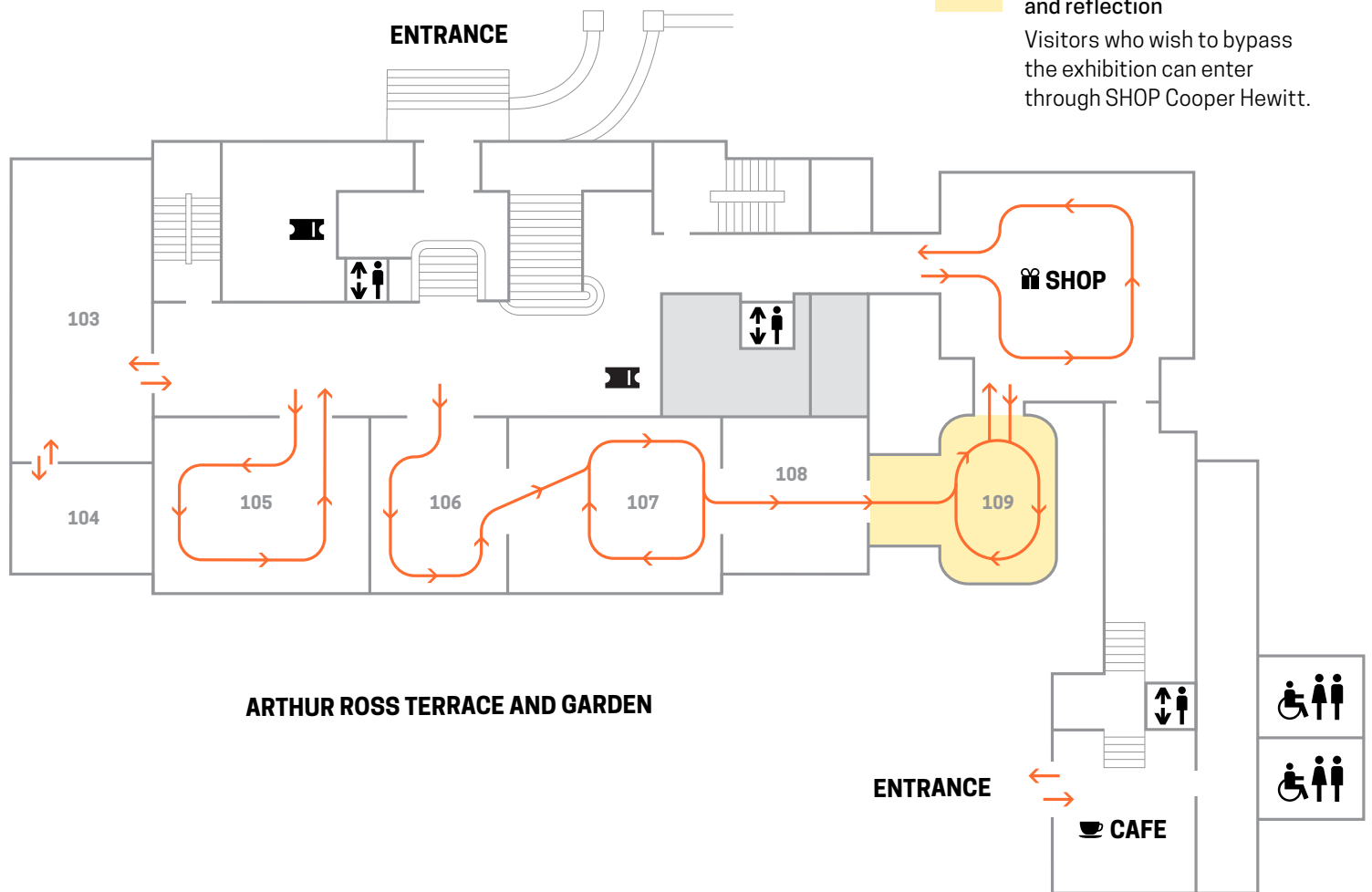


The arrows on the map indicate our suggested route through the galleries. Please maintain a safe social distance from other visitors.



A Breathing Space for rest and reflection

Visitors who wish to bypass the exhibition can enter through SHOP Cooper Hewitt.



FACE VALUES: EXPLORING ARTIFICIAL INTELLIGENCE

Through Fall 2022

Galleries 103-104

Explore the pervasive but often hidden role of facial-detection technology in contemporary society.



DURO OLOWU SELECTS

Through August 28, 2022

Gallery 105

Nigerian-British designer Duro Olowu guest curates the 20th installment in Cooper Hewitt's Selects series, highlighting the theme of pattern and repetition throughout the collection.



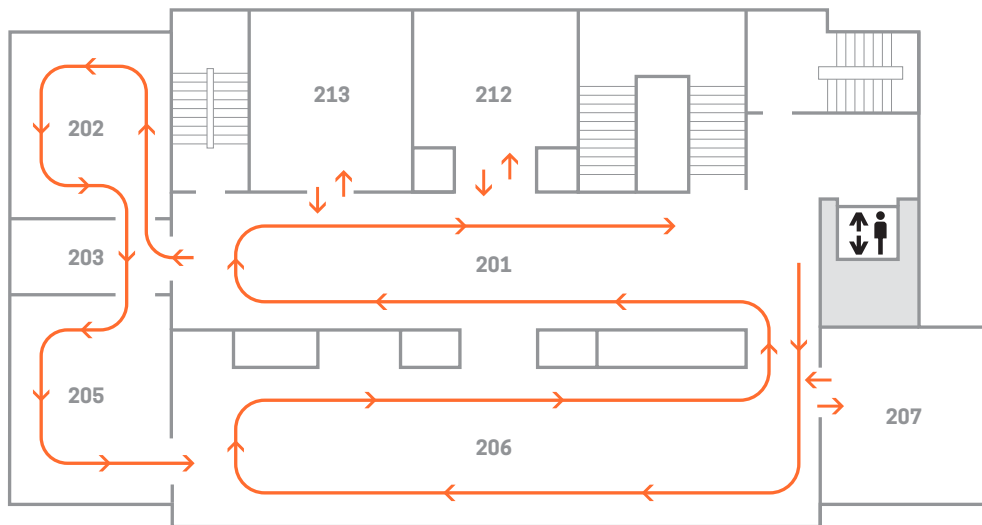
DESIGN AND HEALING: CREATIVE RESPONSES TO EPIDEMICS

Through February 20, 2023

Galleries 106-109

What is design's role in times of crisis? This exhibition features the work of designers, artists, doctors, engineers, and neighbors who in times of need—past and present—asked, "How can I help?"

2 FLOOR



SARAH & ELEANOR HEWITT: DESIGNING A MODERN MUSEUM

Through October 10, 2022
Gallery 201

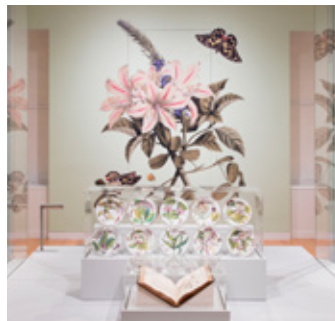
Learn about Sarah and Eleanor Hewitt—Cooper Hewitt's founders, educators, collectors, and philanthropists—and discover how their vision continues to influence the museum today.



FOREIGN EXCHANGE: 18TH-CENTURY DESIGN ON THE MOVE

Through Sep. 25, 2022
Galleries 202, 203, 205

Explore the unprecedented circulation of labor, skills, aesthetics, and luxury goods across international borders in the 18th century.



NATURE BY DESIGN: BOTANICAL EXPRESSIONS

Through Sep. 25, 2022
Gallery 206

Learn how designers across the centuries have observed nature, investigated its materials, and imitated and abstracted its patterns and shapes.



SOPHIA CROWNFIELD: DRAWN FROM NATURE

Through July 31, 2022
Gallery 213

Discover the work of Sophia Crownfield who designed textiles and wallpapers for some of the country's most prominent firms, from the 1890s through the 1920s.



CARNEGIE MANSION

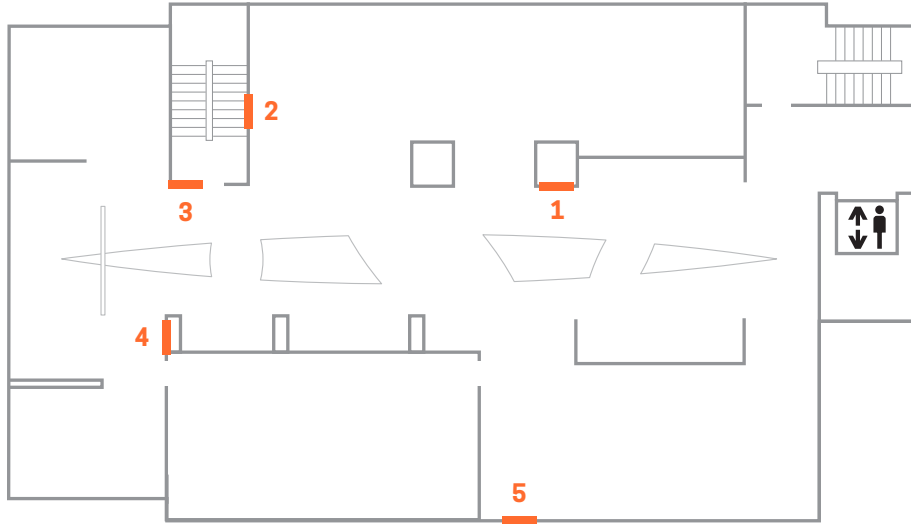
Cooper Hewitt is housed in the former home of industrial magnate and philanthropist Andrew Carnegie and his family. Completed in 1902, the mansion was designed in the style of an English Georgian country house.



Learn more about the building that Cooper Hewitt calls home. Book available for purchase.

shop.cooperhewitt.org

3 FLOOR



FIVE QUESTIONS

- 1 How can design engage creative confrontation?
- 2 How can design help transitions from instability to peace?
- 3 How can design support safe, healthy, respectful environments?
- 4 How can design embrace truth and dignity in a search for peace and justice?
- 5 How can design address the root causes of conflict?



DESIGNING PEACE

Through September 4, 2023

Designing Peace explores the unique role design can play in pursuing peace. The exhibition features design projects from around the world that look at ways to create and sustain more durable peaceful interactions—from creative confrontations that challenge existing structures to designs that demand embracing justice and truth in a search for reconciliation.

GROUND FLOOR

