

COOPER HEWITT

SENSORY MAP

This Sensory Map is a resource to help you plan your visit and feel more comfortable in the museum.

The map uses icons and colors to identify the location of various sensory areas. It highlights where you might find quiet areas and areas with low light. It identifies areas with bright lights, loud sounds, or prevalent smells. The map also shows touchable interactive spaces, places to sit, and other key areas in the museum.

Contact CHAccess@si.edu for any questions about your visit.



MAP LEGEND



Restroom



Elevator



Seating Area



Coat Check



Information



Tickets



Water Fountain



Closed



Quiet and less crowded spaces



Low Light



High light



High smell



High sound

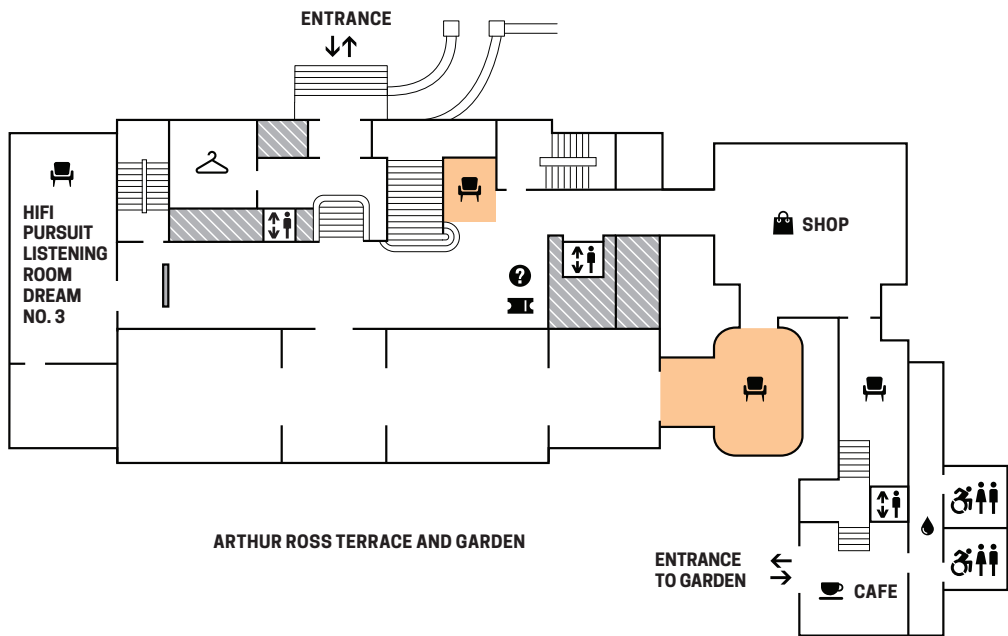


Tactile engagement

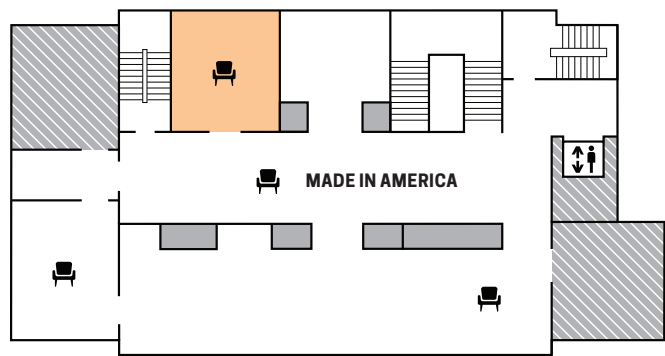
QUIET, LESS CROWDED, AND LOW LIGHT SPACES



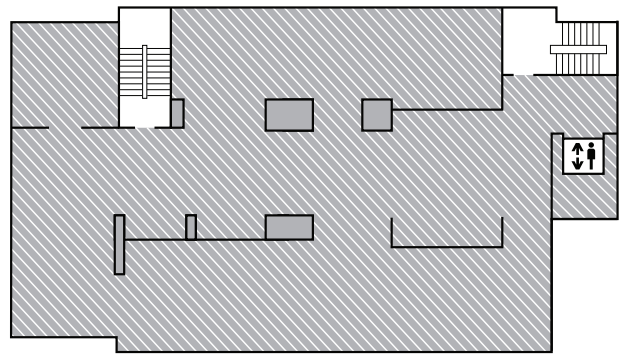
1



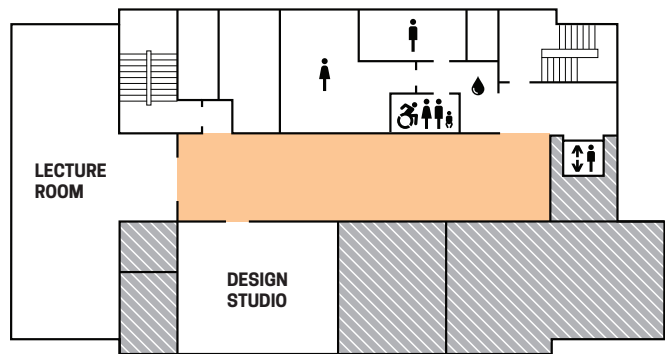
2



3

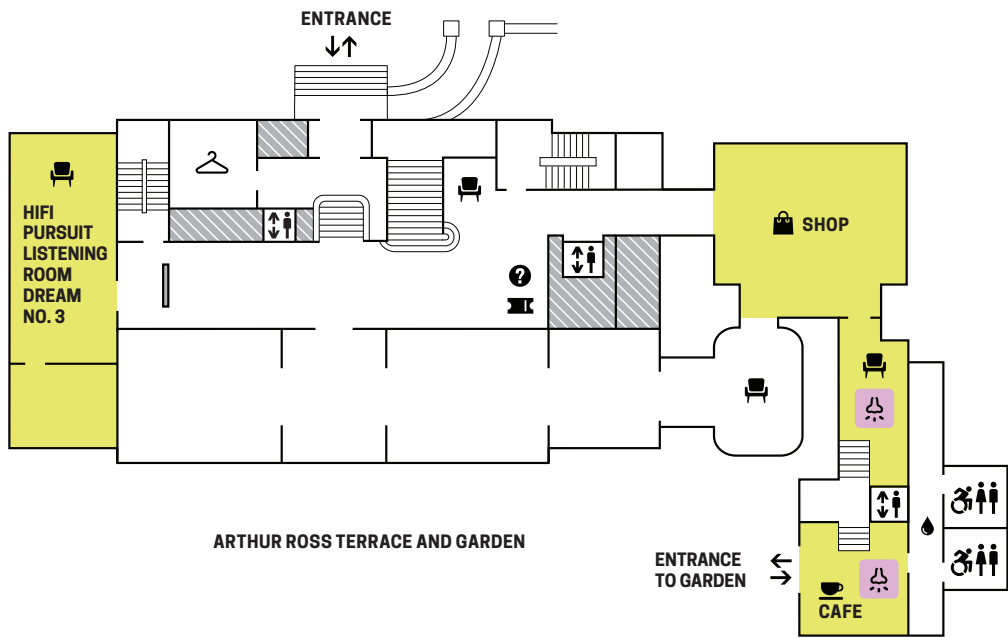


G

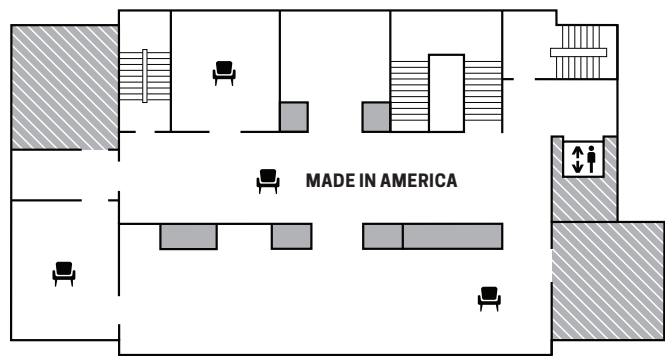


HIGH SOUND, SMELL, AND LIGHT

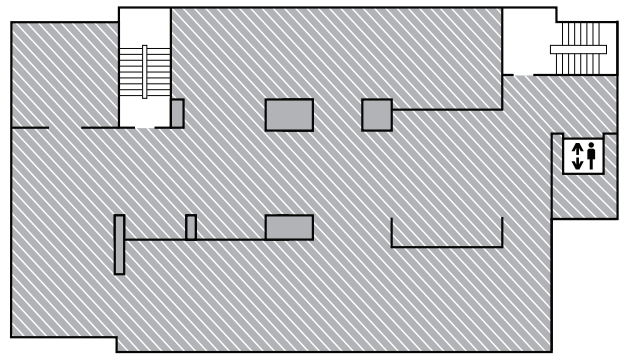
1



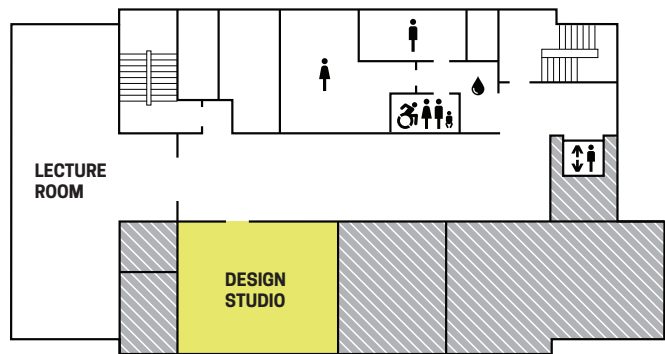
2



3



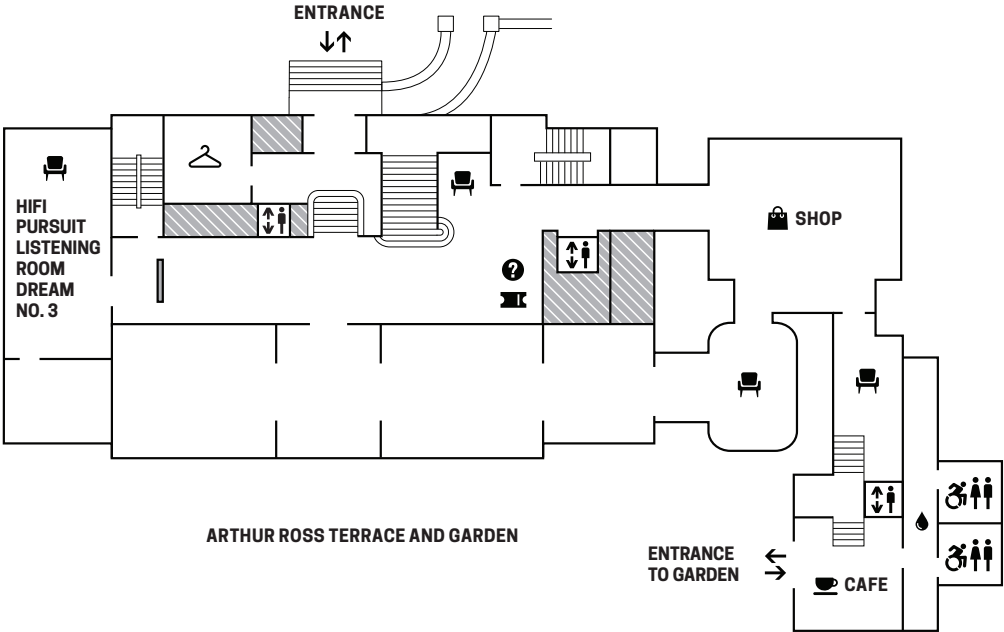
G



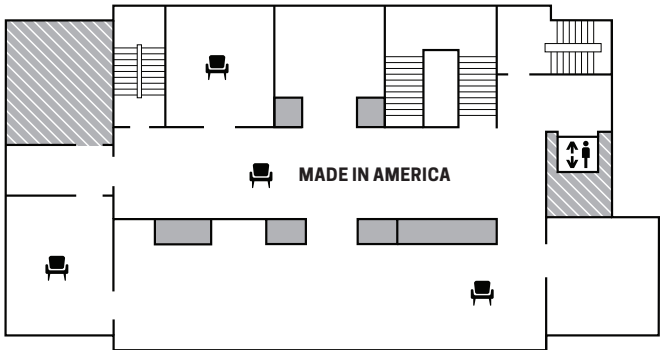
TACTILE ENGAGEMENT



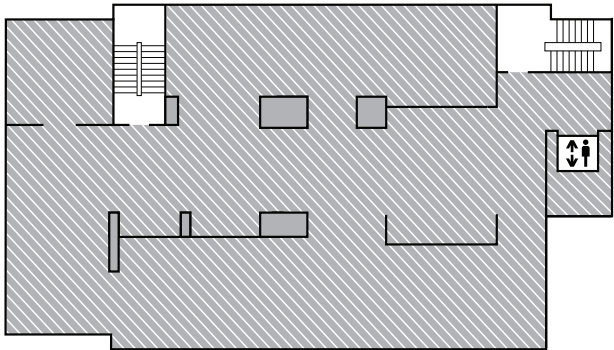
1



2



3



G

